

Alaska Department of Fish and Game

Habitat Section
Southeast Region



191-20-13800 Tributary 4

ADDITION

Water body name:

Survey date: 7/21/2024

Quad: Icy Bay D2, D3

Species & Lifestage:

Upper Reach Latitude: 59.989752 **Longitude:** -141.610615

Survey crew: NJ, DK, CD

Lower Reach Latitude: 59.987876 **Longitude:** -141.619366

Findings: We surveyed this uncataloged stream a backpack electrofisher, baited minnow traps, and GPS and captured juvenile coho salmon and Dolly Varden; no anadromous fish caught above the confluence with tributary 5. Upstream from the tributary 5 confluence, the stream becomes highly braided and mobile through forest. Gradient increases considerably where it forks at waypoint 771; barrier likely not far from here (Table 1; Figures 1–3).

Recommendations: Add this uncataloged stream to the anadromous waters catalog for rearing coho salmon up to the confluence with tributary 5 (Figure 4).

Nomination: Pending

Table 1.–191-20-13800 tributary 4 survey data.

Waypoint	Latitude	Longitude	Notes	Stream Width ft	Stream Substrate	Habitat Features	Gradient %	Sample Effort	Sample Results
671	59.988826	-141.613880	Clear water stream, looks like good fish habitat. Approx 10ft wide and very little flow. Will come back to fish upstream further, can't cross here with vehicles.		Small Gravel		0-1	MT	5 CO
770	59.990631	-141.598566	Continuing to follow channel upstream gradient increases slightly. There is a log jam presence and 1 foot waterfall.				4-6		
771	59.990889	-141.597412	Main channel forks into two channels, river left seems to be the main and river right is distrib. Gradient noticeably increases. Channel becomes more incised. Barrier likely not far upstream of here.		Large Gravel Cobble		6-8	EF	2 DV
1103	59.990723	-141.598428	Still on Main stem of creek. Braided routes through forest is less so here within more than fine channel. Grading has increase slightly to about 6 to 7%. Several small step pools intermittent.		Cobble		4-6	EF	No Fish



Figure 1.–Juvenile coho salmon caught at waypoint 671.



Figure 2.—Upstream at waypoint 671.



Figure 3.—Downstream at waypoint 671.

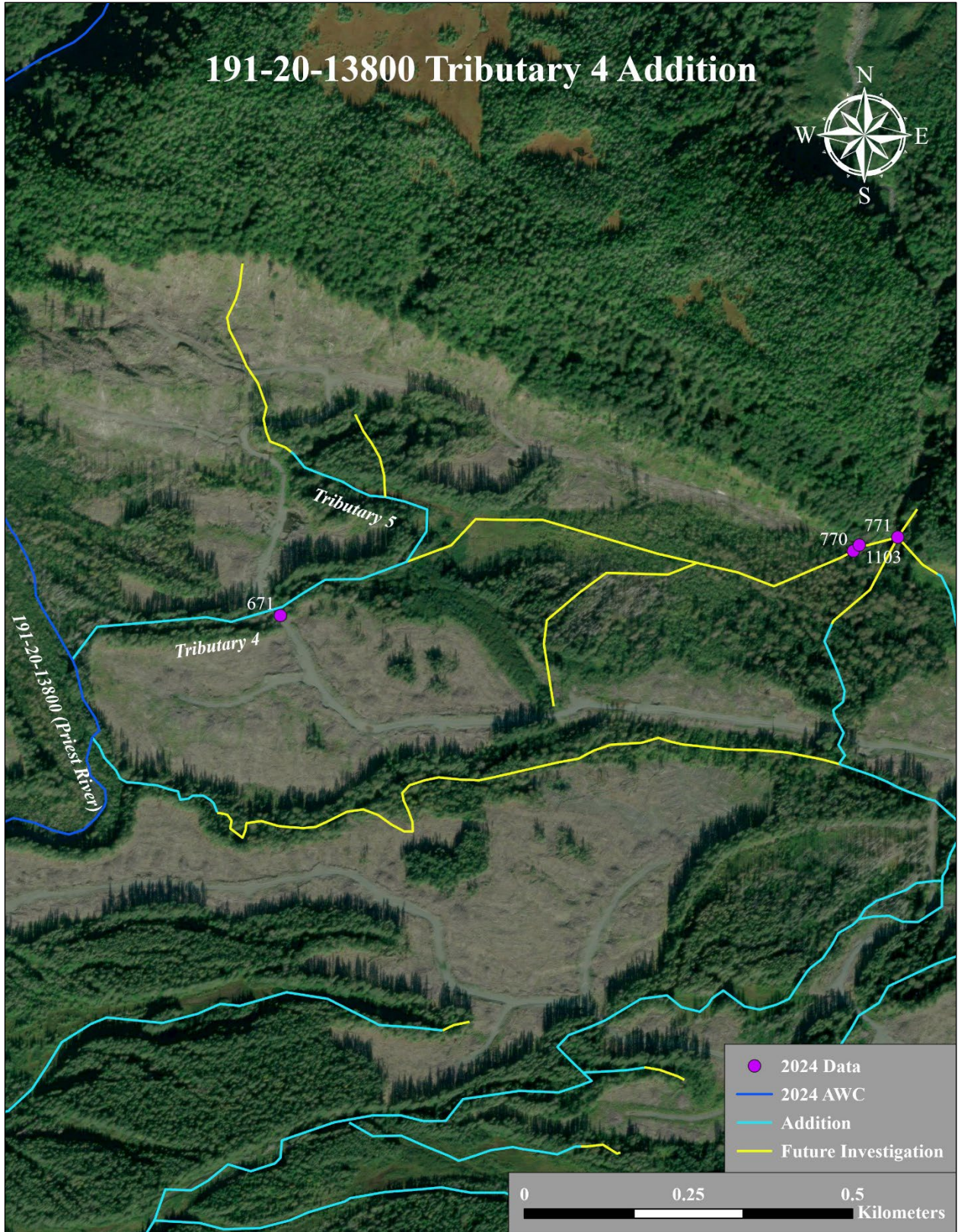


Figure 4.–191-20-13800 tributary 4 addition map.